

Emergency Pendant

Do you worry about an older friend or family member living alone? Do you have concerns about what might happen should they suffer a fall, sudden illness or emergency situation with nobody around to help? Recent research has shown that older people are at very high risk of falling or suffering an accident, both inside and outside of the home. In fact, 50% of people aged 65 and over will experience at least one fall per year.

For those aged 80 or over, the statistics are even more worrying. Three-quarters of people within this age group will suffer at least one fall within a 12-month period. With this in mind, finding ways to give both elderly people, who wish to continue living an independent lifestyle, and their concerned loved ones greater peace of mind is imperative. What better way to achieve this than with an emergency pendant?

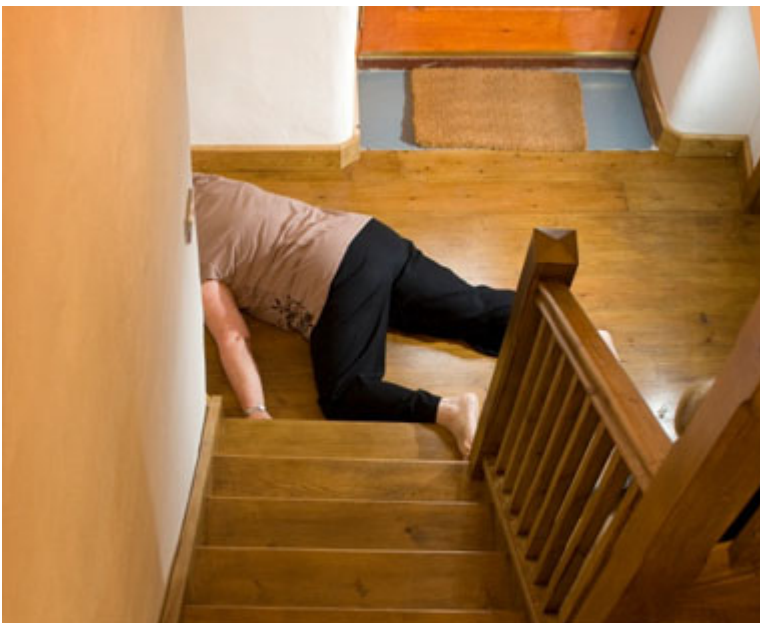
SureSafe 24/7 Connect



SureSafeGO 'Anywhere' Alarms



Fall Detection Alarms



What Is An Emergency Pendant?

An emergency pendant is a device usually worn around the neck. It is designed to alert a responder in the event of a problem. If the user experiences a fall, illness or emergency situation, they can instantly contact somebody for help. This person would usually be a nominated friend or relative. Failing this a 24/7 monitoring center would be alerted. The rapid response team can then assess the situation and take the necessary course of action in order to aid the injured or distressed party.

Emergency pendants can be purchased from many personal alarm

companies and all have similar functionalities. The exception to this is the SureSafe [talking pendant](#), with two way communication technology. For the majority of emergency pendants, there is a base unit and a separate pendant containing the panic button. When the button is pressed, users cannot speak unless they are near the base unit for the most part. The talking pendant however, allows the user to speak and be spoken to, wherever they find themselves in the house. This is so long as they are still within the base units' maximum range.

This assumes the pendant is using landline based technology. If using a mobile technology based device, such as the ['Go Anywhere'](#) talking pendant, the wearer can request help, and speak to the responders, regardless of their location.

How Does An Emergency Pendant Work?

As previously mentioned emergency pendants use either a telephone landline or mobile technology in order to communicate between the button and the base unit. The base unit will then automatically dial the rapid response center or a chosen friend or relative. Depending on the circumstances, the responder can then alert the emergency services or provide assistance themselves.

[Landline based units](#) are a great option for elderly people who spend much of their time within the home. They are reliable, affordable and easy to use. They are not however, appropriate for those who maintain an active lifestyle, spending much of their time outside of the home, or for those without landlines. [Mobile devices](#), utilising GPS technology are much more suitable.

In the same way as landline solutions, mobile personal alarms also transmit a signal when the emergency button is pressed, or if a fall is detected. This alerts a nominated contacts or the monitoring centre so that help can be requested. Due to

the GPS technology, SureSafe mobile alarms are also able to send text alerts to establish location and utilise the unique SureSafe two way communication technology.



[Add to cart](#)
[Quick view](#)

SureSafeGO 24/7 Connect 'Anywhere'

Alarm – £18.99 per month

**SureSafeGO 24/7 Connect ‘Anywhere’ Alarm
– £18.99 per month**

£149.95 [View Detail](#)



[Add to cart](#)
[Quick view](#)

SureSafe TalkSafe with 24/7 Monitoring

SureSafe TalkSafe with 24/7 Monitoring

£199.95 [View Detail](#)
Sale!

SureSafe
PERSONAL EMERGENCY CALL SYSTEM



SureSafe
PERSONAL EMERGENCY CALL SYSTEM



[Add to cart](#)
[Quick view](#)

OPTION 3: 12 Months Package – Save £20! No Connection Fee!

OPTION 3: 12 Months Package – Save £20!
No Connection Fee!

~~£179.88~~ £159.95 [View Detail](#)



[Add to cart](#)
[Quick view](#)

FallSafe with 24/7 Connect Monitoring

FallSafe with 24/7 Connect Monitoring

£124.95 [View Detail](#)

Choosing A SureSafe Emergency Pendant

If you or an elderly loved one could benefit from a personal alarm, a SureSafe emergency pendant could be the perfect solution. Designed to be fast and simple to set up and use, it enables the wearer to maintain an independent lifestyle with drastically reduced concerns. It has been shown that older people who feel more secure are more likely to venture outside more frequently than those who are worried about the consequences of a fall or accident. Greater confidence brings with it a greater quality of life.

Contact our experienced team today to find the perfect solution for you and your loved ones.

JTNDc2NyaXB0JTlwc3JjJTNEJTIyaHR0cHMlM0ElMkYlMkZ3aWRnZXQucmV2aWV3cy5jby5layUyRmNhcm91c2VsJTJGZGlzdC5qcyUyMiUzRSUzQyUyRnNjcmlwdCUzRSUwQSUzQ2RpdUyMG1kKJTNFJTIyY2Fyb3VzZWwtd2lkZ2V0LTgxCUyMiUyMHN0eWxlJTNEJTIyd2lkdGglM0ElMjAxMDAlMjU1M0IlMjBtYXgtd2lkdGglM0ElMjA4MTBweCUzQiUyMG1hcmdpbiUzQSUyMDAlMjBhdXRvJTNCJTIyJTNFJTNDJTJGZGl2JTNFJTBBJTNDc2NyaXB0JTNFJTBBY2Fyb3VzZWwXaWRnZXQlMjglMjdjYXJvdXNlbC13aWRnZXQt0DEwJTl3JTJdJTdCJTBBJTlwc3RvcmlM0ElMjAlMjdzdXJlLXNhZmUtJTl3JTJdJTBBJTlwcHJpbWYyUNsciUzQSUyMCUyNyUyMzExQ0Q2QiUyNyUyQyUwQSUyMCUyMG5ldXRyYXNDbHIlM0ElMjAlMjc1MjNmNGY0ZjQlMjc1MkMlMEElMjAlMjByZXZpZXdUZXh0Q2xyJTNBjTIwJTl3JTl3NDk0TQ5JTl3JTJdJTBBJTlwcHJpbWYyUNsciUzQSUyMDAlMjBhdXRvJTl3bnVtUmV2aWV3cyUzQSUyMDIxJTBBJTdEJTl5JTNCJTBBJTNDJTJGc2NyaXB0JTNF