

# Which Is The Best Personal Alarm For Elderly

Many older people these days want to live independently for as long as possible. Some may live alone while others live with their elderly partners. While independent living is great in terms of their quality of life, it is also important to think of the possible risks and make sure there is protection in place.

Older people tend to have far more health issues than younger people. In addition, they may have mobility issues and be more at risk of suffering an injury or fall. If something happens when they are alone or with an elderly partner than cannot help them, they could find themselves in a very difficult situation. Choosing which is the best personal alarm for elderly people is one of the ways in which you can put protection in place.

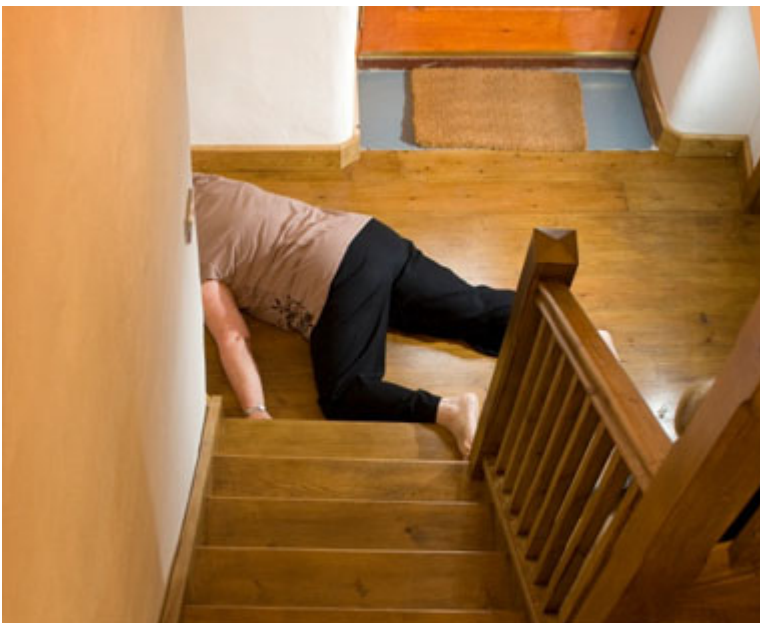
## **SureSafe 24/7 Connect**



## **SureSafeGO 'Anywhere' Alarms**



## Fall Detection Alarms



### Choose from a Variety of Alarms

If you are looking to choose which is the best personal alarm for elderly people, it is important to look at the options available and match them to the user's needs. You will find a wide variety of different ones you can choose from. Some of these include:

- SureSafe 24/7 Connect Alarms
- SureSafeGO 'Anywhere' Alarms
- Fall Detection Alarms
- Friends & Family Alarms
- Talking Pendant Alarms

## ▪ No Landline Alarms

There are alarms available to suit all situations and circumstances. For instance, if the person has limited movement in the arms, a wrist worn alarm may be ideal as it is easier to reach. If they have difficulties speaking or hearing, a fall detection alarm will automatically alert the necessary people. There are friends and family alarms that will contact designated people and even SureSafeGO alarms for older people that like to go out and about but still want protection.

## **Why an Alarm Is Important**

There are many reasons why having a personal safety alarm is important if you are elderly. As we get older, our bodies do become less mobile and frailer, which could then mean an increased risk of falling or accidents. Increased health problems can also add to the risks for older people who live alone or have limited support.

Having an alarm means that if anything happens such as a fall, an injury, or a medical emergency, you can easily get in touch with someone for assistance. Depending on the alarm system you have, this could be a family member or friend, or it could go through to 24/7 monitoring services. They can then get in touch with family or with the emergency services if necessary.



---

[Add to cart](#)

[Quick view](#)

**SureSafeGO 24/7 Connect 'Anywhere' Alarm – £18.99 per month**

**SureSafeGO 24/7 Connect 'Anywhere' Alarm**

– **£18.99 per month**

£149.95 [View Detail](#)



---

[Add to cart](#)

[Quick view](#)

**SureSafe TalkSafe with 24/7  
Monitoring**

# SureSafe TalkSafe with 24/7 Monitoring

£199.95 [View Detail](#)



---

[Add to cart](#)

[Quick view](#)

**FallSafe with 24/7 Connect  
Monitoring**

# FallSafe with 24/7 Connect Monitoring

£124.95 [View Detail](#)

Sale!



---

[Add to cart](#)

[Quick view](#)

## 'Fall Alert' Pendant with 24/7 Monitoring

### 'Fall Alert' Pendant with 24/7 Monitoring

~~£179.95~~ ~~£124.95~~ [View Detail](#)

Find Out More About Which is the Best Personal Alarm for Elderly People

If you want an emergency alarm for yourself or for an elderly relative, contact the team at SureSafe Alarms. We have a wide range of alarm options available to suit different needs and situations. This makes it easier to find which is the best personal alarm for elderly people. We can provide you with advice and information about each of our products so you can get the best one for your needs or those of your family member.

JTNDc2NyaXB0JTlwc3JjJTNEJTIyaHR0cHMlM0ElMkYlMkZ3aWRnZXQucmV2aWV3cy5jby5layUyRmNhcm91c2VsJTJGZGlzdC5qcyUyMiUzRSUzQyUyRnNjcmIwdCUzRSUwQSUzQ2RpdUyMG1kJTNEJTIyY2Fyb3VzZWwtd2lkZ2V0LTgxmCUyMiUyMHN0eWxlJTNEJTIyd2lkdGglM0ElMjAxMDAlMjUlM0IlMjBtYXgtd2lkdGglM0ElMjA4MTBweCUzQiUyMG1hcmdpbiUzQSUyMDAlMjBhdXRvJTNCJTIyJTNEJTNkJTJGZGl2JTNEJTBBJTNDc2NyaXB0JTNEJTBBy2Fyb3VzZWwXaWRnZXQlMjglMjdlYXJvdXNlbC13aWRnZXQt0DEwJTl3JTJdJTdCJTBBJTlwc3RvcmlM0ElMjAlMjdzdXJlLlXNhZmUtJTl3JTJdJTBBJTlwcHJpbWYyUzUzQSUyMCUyNyUyMzExQ0Q2QiUyNyUyQyUwQSUyMCUyMG5ldXRyYXNlM0ElMjAlMjclMjNmNGY0ZjQlMjclMkMlMEElMjAlMjByZXZpZXdUZXh0Q2xyJTNEJTIwJTl3JTl3NDk0OTQ5JTl3JTJdJTBBJTlwcHJpbWYyUzUzQSUyMCUyMDEwJTBBJTdEJTI5JTNCJTBBJTNDJTJGc2NyaXB0JTNE